

FAIRPLAIN PLAZA

1701 M-139, Benton Harbor, MI 49022



SUSAN ACCIAIOLI

248 855 6800

sacciaioli@midamericagr.com

ERIC BIRNOLTZ

248 855 6800

ebirnoltz@midamericagr.com

LORMAX STERN

FEATURES

- Dominant power center of the Benton Harbor/ St. Joseph regional trade area
- Major retail market for Southwestern Michigan, which is home to over 400,000 residents
- Shared traffic with heavily traveled I-94
- Average household income is over \$87,000 per year within a 10 mile radius

DEMOGRAPHICS

POPULATION	5 MILES	10 MILES	20 MILES
Total Population	49,833	78,003	151,220
Average Age	41.2	42.2	42.3
Average Age (Male)	39.4	40.6	41.0
Average Age (Female)	42.9	43.7	43.7

HOUSEHOLDS & INCOME	5 MILES	10 MILES	20 MILES
Total Households	21,086	32,325	61,976
Average Household Size	2.35	2.36	2.40
Average Household Income	\$80,654	\$87,179	\$83,632

AVAILABILITY

- 2,860 SF
- 2,795 SF
- 3,020 SF

ANCHORS

KOHL'S



Dunham's
SPORTS

T.J. MAXX

Michaels

DOLLAR TREE

TRAFFIC COUNT

- 15,127 VPD – Scottdale RD (M-139)
- 12,176 VPD – E. Napier Ave

SUSAN ACCIAIOLI

248 855 6800

sacciaioli@midamericagr.com

ERIC BIRNOLTZ

248 855 6800

ebirnoltz@midamericagr.com



MICRO AERIAL



SUSAN ACCIAIOLI
248 855 6800
sacciaioli@midamericagr.com

ERIC BIRNOLTZ
248 855 6800
ebirnoltz@midamericagr.com



MACRO AERIAL



SUSAN ACCIAIOLI
 248 855 6800
 sacciaioli@midamericagr.com

ERIC BIRNOLTZ
 248 855 6800
 ebirnoltz@midamericagr.com



SITE PLAN

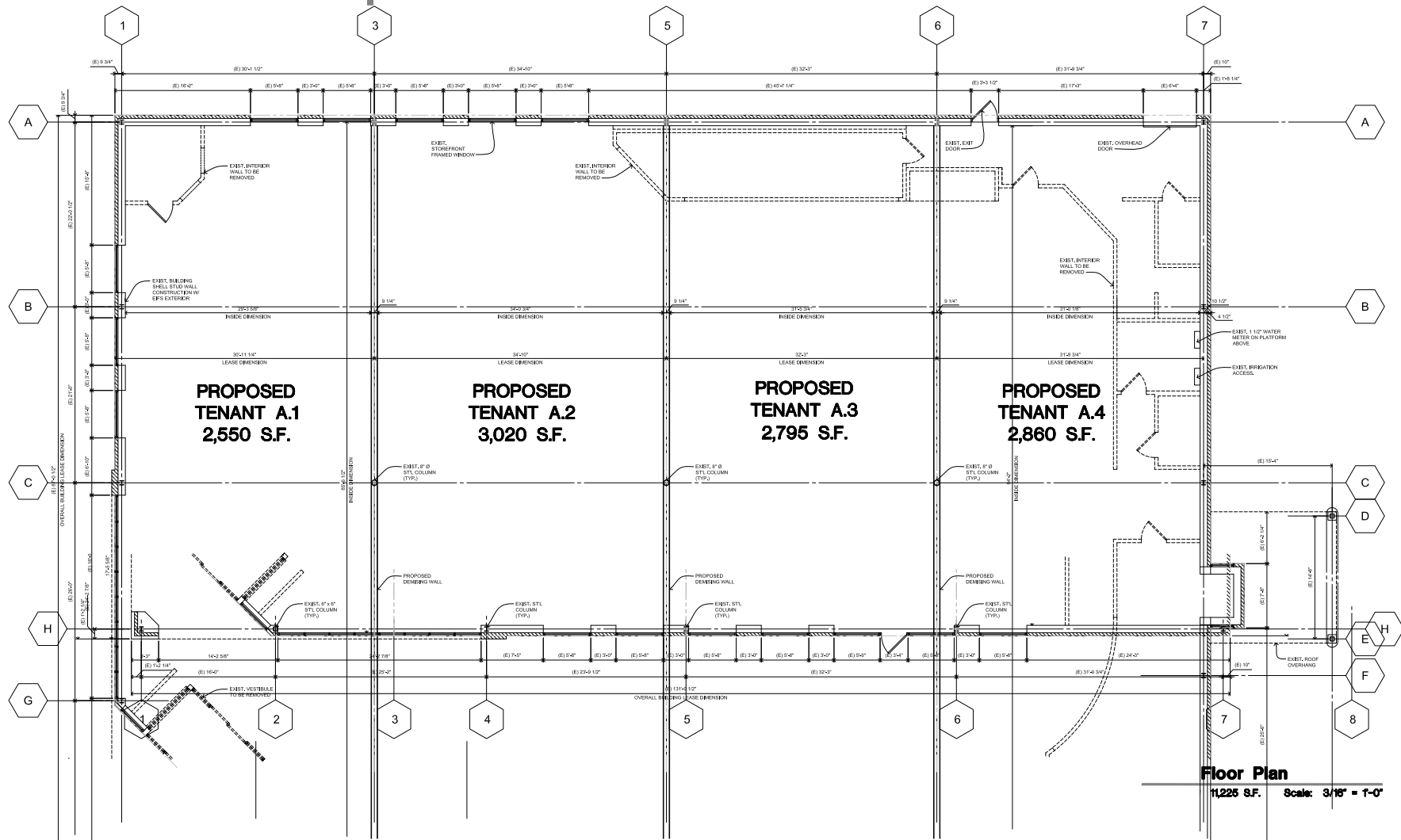


SUSAN ACCIAIOLI
248 855 6800
sacciaioli@midamericagr.com

ERIC BIRNOLTZ
248 855 6800
ebirnoltz@midamericagr.com



SITE PLAN



SUSAN ACCIAIOLI

ERIC BIRNOLTZ

248 855 6800

248 855 6800

sacciaioli@midamericagr.com

ebirnoltz@midamericagr.com

