

GRAND TRAVERSE RETAIL CENTER

3400 W South Airport Rd, Traverse City, MI 49684



PROPERTY DESCRIPTION

Redevelopment of former anchor box at Grand Traverse Mall positioned strongly at the intersection of US-31 and W South Airport Road.

Grand Traverse Mall features strong national retailers and anchoring tenants in the prime shopping and trade corridor for the greater Grand Traverse market. Located along US-31, provides exemplary consumer traffic from local residents, frequent vacationers, and tourists to and from Traverse City. Traverse City's tourism sector has a \$1.3 billion impact on the larger region's economy.

PROPERTY SUMMARY

Nearby Tenants:	Old Navy, TJ Maxx, JCPenney, Burlington, Five Below, Target, Dunham's, Famous Footwear
Available SF:	10,357 SF - 13,676 SF

DEMOGRAPHICS	10 MILES	15 MILES	25 MILES
Total Population	91,605	113,441	163,108
Total Households	39,051	47,857	69,050
Average HH Income	\$110,931	\$111,893	\$108,276

Chris Brochert
(248) 737-7110
cgb@lormaxstern.com

Daniel Stern
(248) 737-7110
dls@lormaxstern.com



GRAND TRAVERSE RETAIL CENTER

3400 W South Airport Rd, Traverse City, MI 49684

MARKET AERIAL



Chris Brochert
(248) 737-7110
cgb@lormaxstern.com

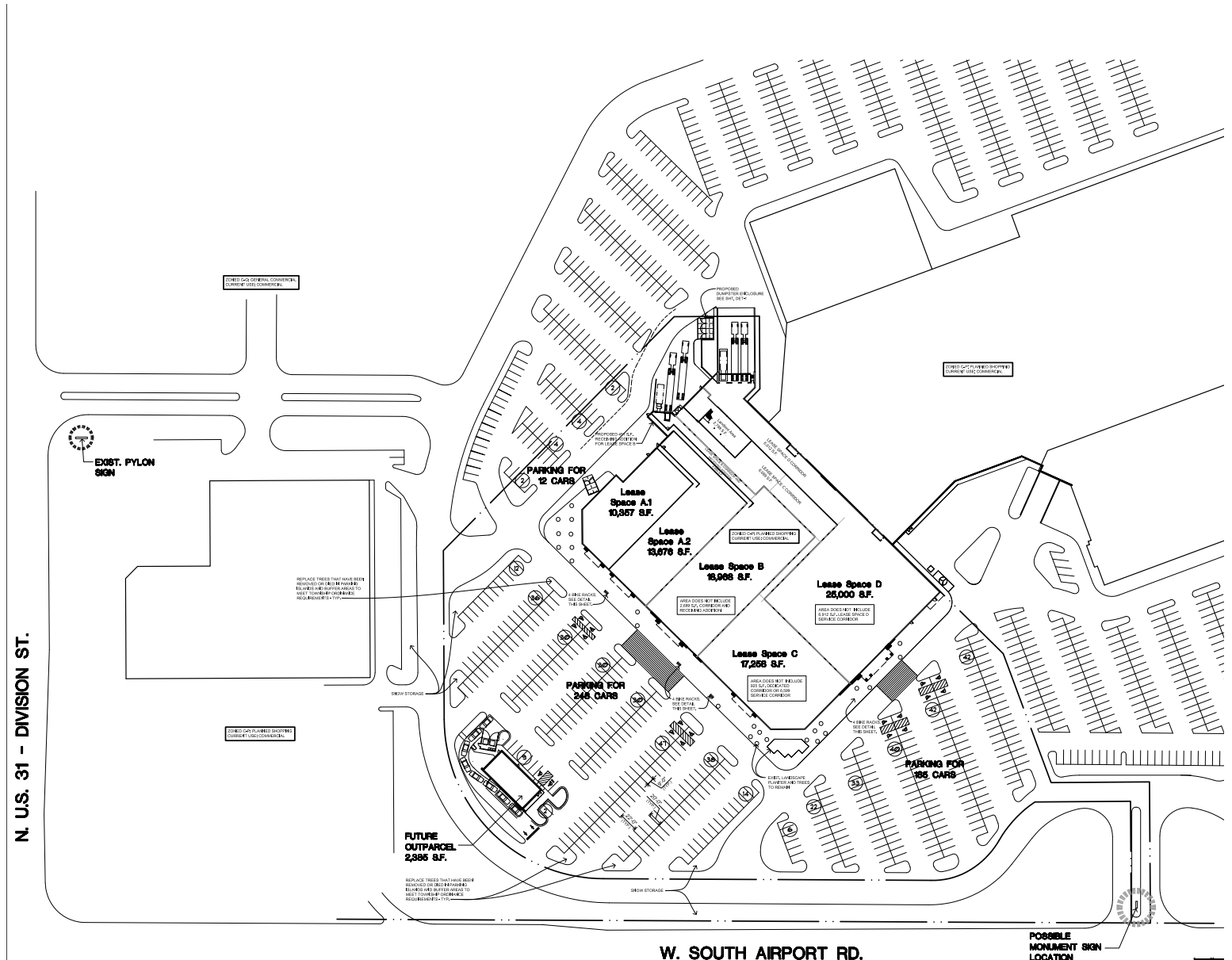
Daniel Stern
(248) 737-7110
dls@lormaxstern.com

LORMAX STERN

GRAND TRAVERSE RETAIL CENTER

3400 W South Airport Rd, Traverse City, MI 49684

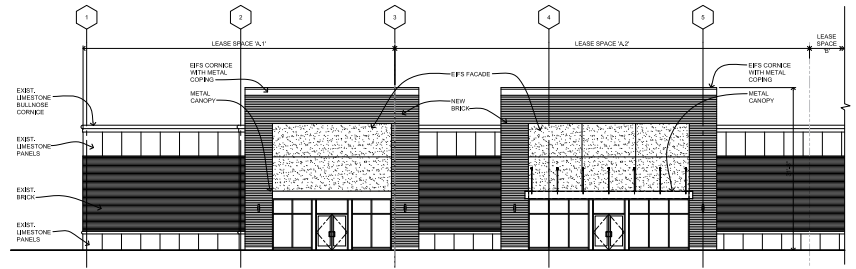
SITE PLAN



GRAND TRAVERSE RETAIL CENTER

3400 W South Airport Rd, Traverse City, MI 49684

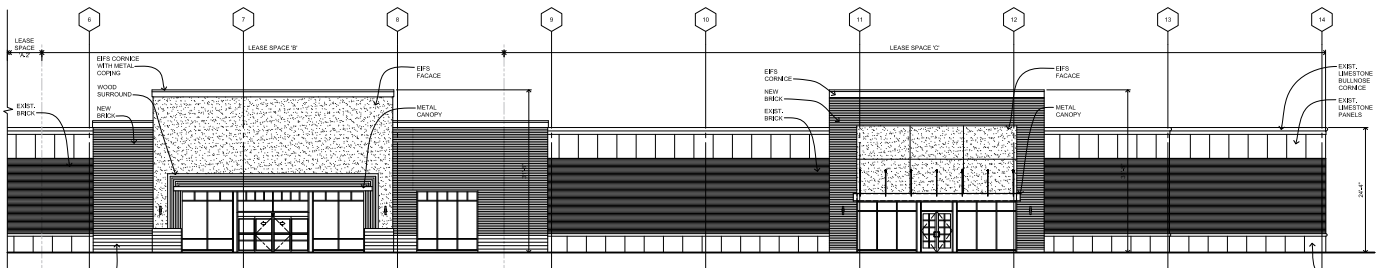
ELEVATIONS



Partial South Elevation

Scale: 3/32"=1'-0"

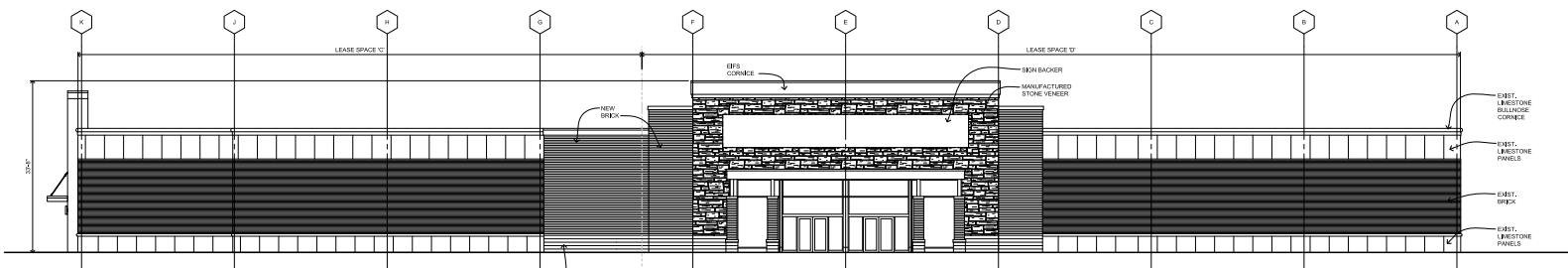
NOTE:
ALL CHANGE SUBJECT TO
CITY REVIEW AND APPROVAL



Partial South Elevation

Scale: 3/32"=1'-0"

NOTE:
ALL CHANGE SUBJECT TO
CITY REVIEW AND APPROVAL



East Elevation

NOTE:
ALL CHANGE SUBJECT TO
CITY REVIEW AND APPROVAL